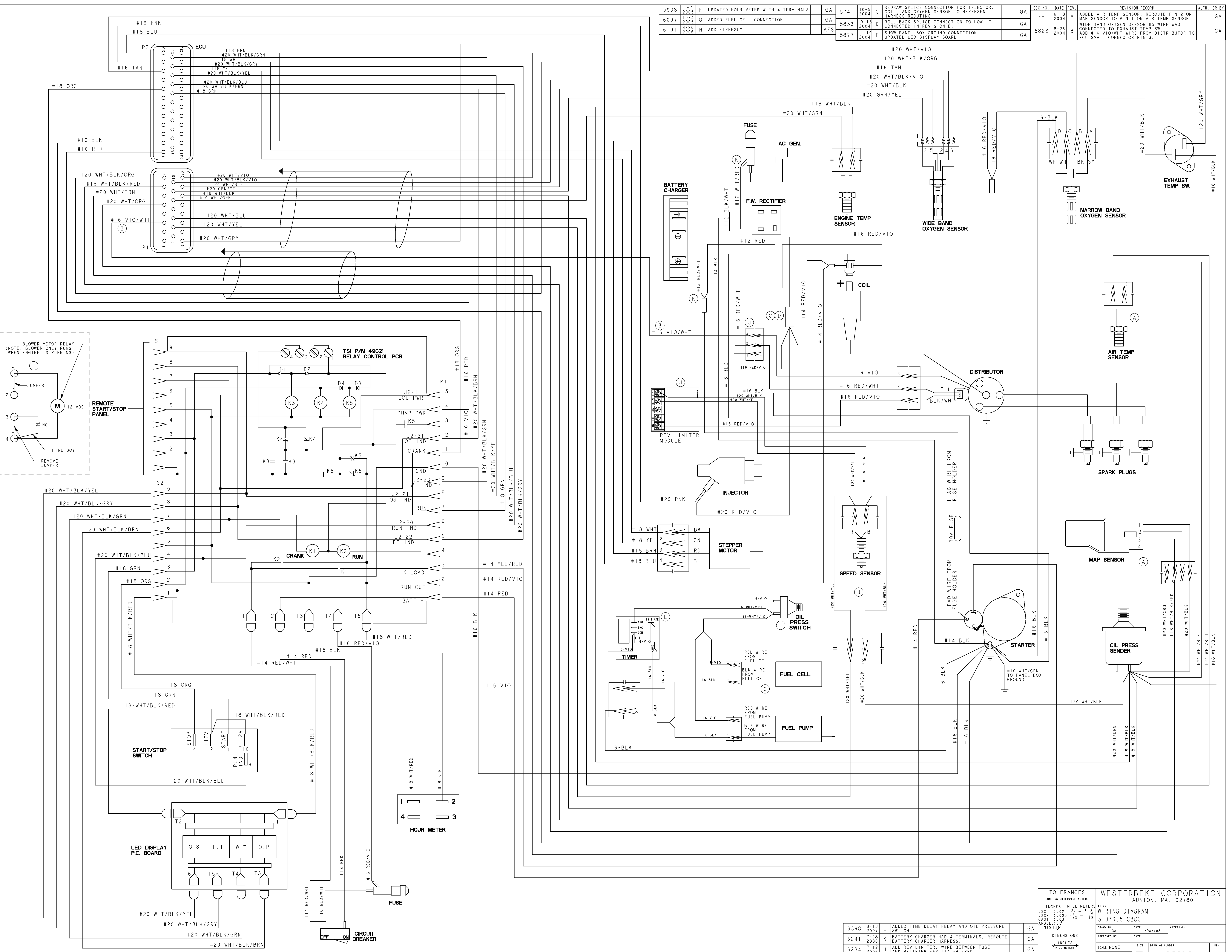


ECO NO.	DATE	REV.	REVISION RECORD	AUTH.	DR. BY
5908	1-7-2005	F	UPDATED HOUR METER WITH 4 TERMINALS.	GA	5741
6097	10-4-2005	G	ADDED FUEL CELL CONNECTION.	GA	5853
6191	4-20-2006	H	ADD FIREGUY	AFS	5877
	10-5-2004	C	REDRAW SPILCE CONNECTION FOR INJECTOR, COIL, AND OXYGEN SENSOR TO REPRESENT HARNESS ROUTING.	GA	5823
	10-15-2004	D	ROLL BACK SPILCE CONNECTION TO HOW IT CONNECTED IN REVISION B.	GA	5823
	11-19-2004	E	SHOW PANEL BOX GROUND CONNECTION. UPDATED LED DISPLAY BOARD.	GA	5823
	6-18-2004	A	ADDED AIR TEMP SENSOR; REROUTE PIN 2 ON MAP SENSOR TO PIN 1 ON AIR TEMP SENSOR.	GA	
	8-26-2004	B	WIDE BAND OXYGEN SENSOR #5 WIRE WAS CONNECTED TO EXHAUST TEMP SW. ADD #16 VIO/WHT WIRE FROM DISTRIBUTOR TO ECU SMALL CONNECTOR PIN 3.	GA	



TOLERANCES (UNLESS OTHERWISE NOTED)
 INCHES MILLIMETERS
 .XX ± .02 X ± 1.0
 .XXX ± .005 XX ± .13
 CAST ± .03
 FINISH ± .03
 ANGLES: °

WESTERBEKE CORPORATION
 TAUNTON, MA. 02780
 TITLE: WIRING DIAGRAM
 SIZE: 5.0/6.5 SBCG

ECO NO.	DATE	REV.	REVISION RECORD	AUTH.	DR. BY
6368	8-13-2007	L	ADDED TIME DELAY RELAY AND OIL PRESSURE SWITCH.	GA	
6241	7-28-2006	K	BATTERY CHARGER HAD 4 TERMINALS, REROUTE BATTERY CHARGER HARNESS.	GA	
6234	7-12-2006	J	ADD REV-LIMITER WIRE BETWEEN FUSE AND RECTIFIER WAS #14 WHT/RED.	GA	

DIMENSIONS (WHEN APPLICABLE)
 SCALE: NONE
 SIZE: 11/Dec/03
 DRAWING NUMBER: 49166
 SHEET: 1 OF 1
 REV.: